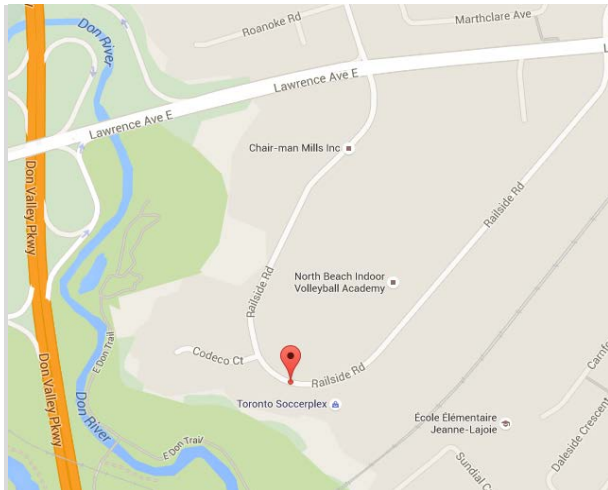


FOR LEASE | OFFICE

# 111 RAILSIDE ROAD #304A

TORONTO | ON



## PROPERTY DETAILS

UNIT SIZE	1520 - 1850 SF
RENTAL RATE	\$2,090 monthly gross lease
ZONING	E 1.0
POSSESSION	Vacant
FEATURES	<ul style="list-style-type: none"><li>Up to 1850 SF available</li><li>Open concept area</li><li>Small storage room</li><li>Surface parking</li></ul>

**K.P. GILLEN & CO. REALTY LTD.**  
BROKERAGE  
40 Scollard Street Suite 200  
Toronto, ON M5R 3S1  
(416) 964 9441  
[www.kpgillen.com](http://www.kpgillen.com)

**KEVIN P. GILLEN**  
FRI, BROKER, PRESIDENT  
(416) 946 9440  
[Kevin@kpgillen.com](mailto:Kevin@kpgillen.com)

**ZHEN LIANG**  
SALES REPRESENTATIVE  
(416) 946 9441 ext. 228  
[Zhen@kpgillen.com](mailto:Zhen@kpgillen.com)

# 111 RAILSIDE ROAD #304A | FLOOR PLANS

Suite 304A

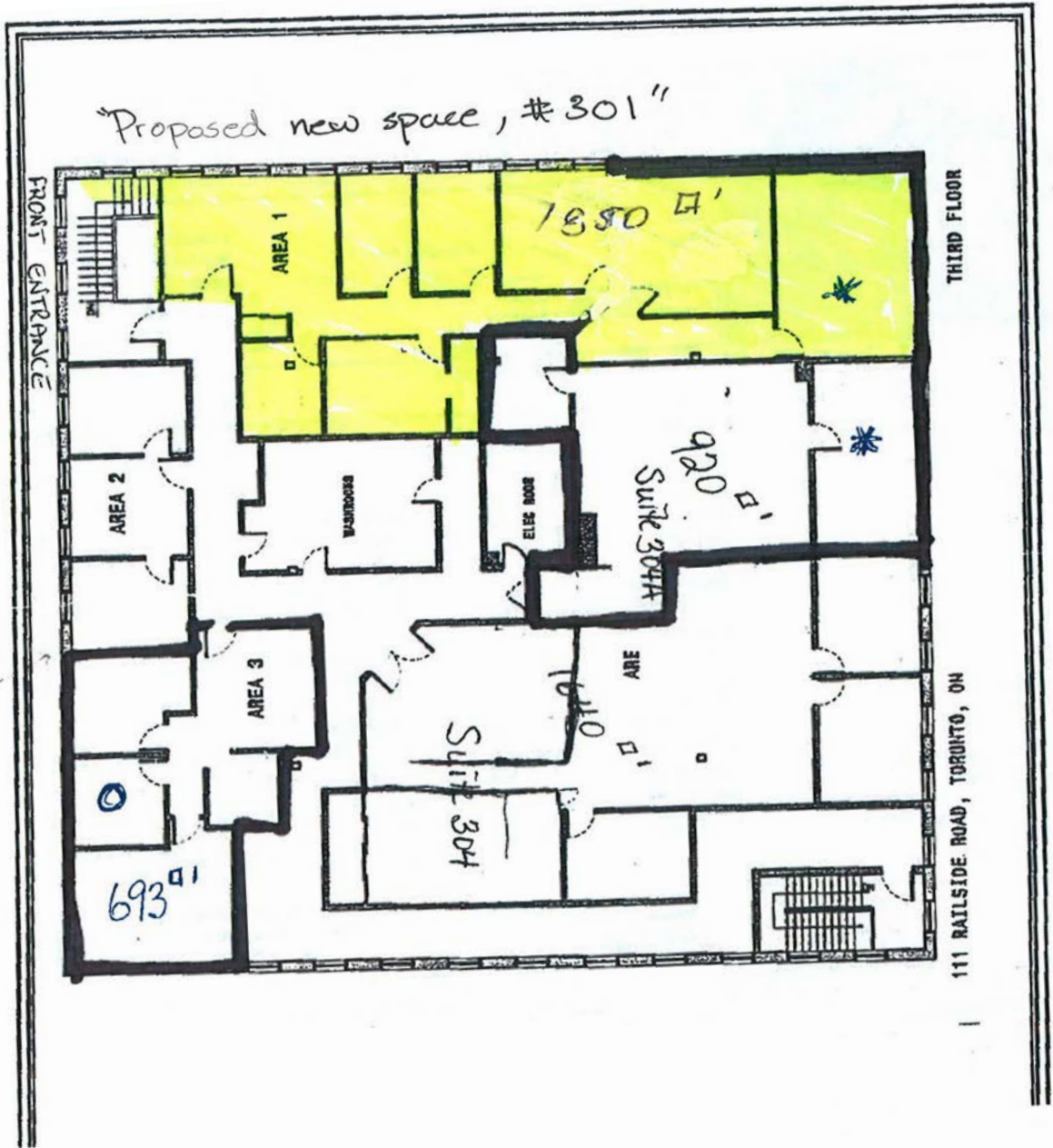


As of Sept. 3/13

\* Suite 304A possible increase to 1520 sq ft

Area 3: ○ Extra 693 sq ft Available

# 111 RAILSIDE ROAD #304A | PROPOSED FLOOR PLANS



**K.P. GILLEN & CO. REALTY LTD.**  
BROKERAGE  
40 Scollard Street Suite 200  
Toronto, ON M5R 3S1  
(416) 964 9441  
[www.kpgillen.com](http://www.kpgillen.com)

**KEVIN P. GILLEN**  
FRI, BROKER, PRESIDENT  
(416) 946 9440  
[Kevin@kpgillen.com](mailto:Kevin@kpgillen.com)

**ZHEN LIANG**  
SALES REPRESENTATIVE  
(416) 946 9441 ext. 228  
[Zhen@kpgillen.com](mailto:Zhen@kpgillen.com)

Although K.P. GILLEN & CO. REALTY LTD. attempts to ensure that all information provided is accurate and complete, we do not represent that it is so, or guarantee it, and accept no liability or obligation for accuracy or completeness. If there is any discrepancy between information posted on our website and in an original paper version, the version that is most current should be considered to be the authoritative version.

# 111 RAILSIDE ROAD #304A | PHOTOS



**K.P. GILLEN & CO. REALTY LTD.**  
**BROKERAGE**  
40 Scollard Street Suite 200  
Toronto, ON M5R 3S1  
(416) 964 9441  
[www.kpgillen.com](http://www.kpgillen.com)

**KEVIN P. GILLEN**  
**FRI, BROKER, PRESIDENT**  
(416) 946 9440  
[Kevin@kpgillen.com](mailto:Kevin@kpgillen.com)

**ZHEN LIANG**  
**SALES REPRESENTATIVE**  
(416) 946 9441 ext. 228  
[Zhen@kpgillen.com](mailto:Zhen@kpgillen.com)

Although K.P. GILLEN & CO. REALTY LTD. attempts to ensure that all information provided is accurate and complete, we do not represent that it is so, or guarantee it, and accept no liability or obligation for accuracy or completeness. If there is any discrepancy between information posted on our website and in an original paper version, the version that is most current should be considered to be the authoritative version.