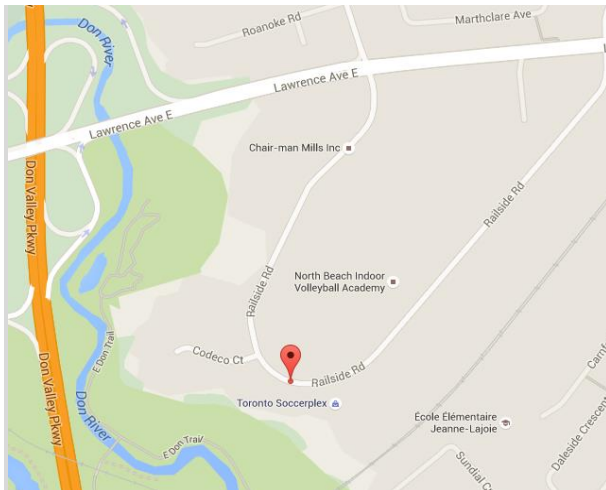


FOR LEASE | OFFICE

# 111 RAILSIDE ROAD- AREA 2

TORONTO | ON



## PROPERTY DETAILS

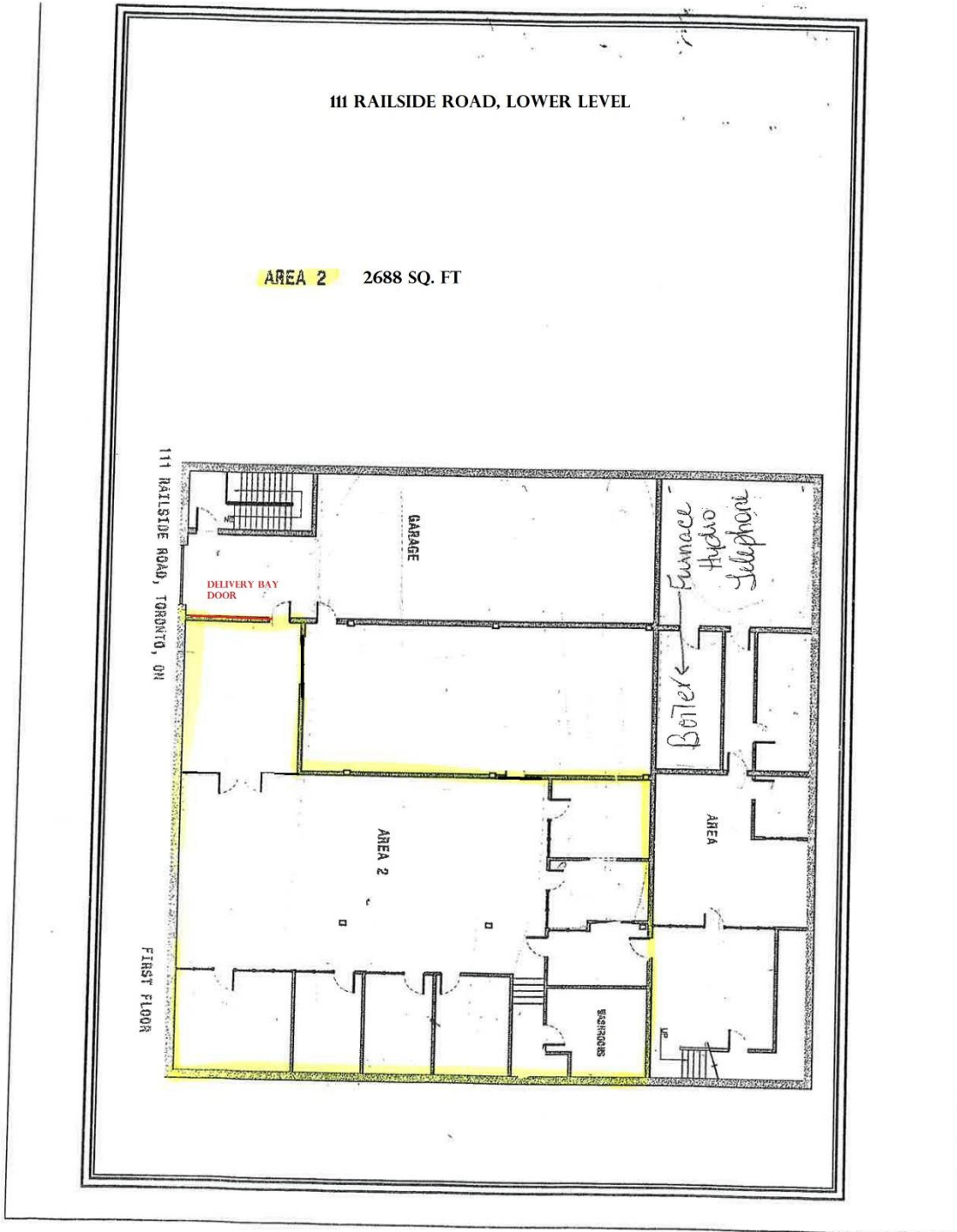
|             |   |
|-------------|---|
| UNIT SIZE   | 2688 SF   |
| RENTAL RATE | \$18.00psf Gross  |
| ZONING      | E 1.0   |
| POSSESSION  | Vacant  |
| FEATURES    | <ul style="list-style-type: none"><li>Open Concept Space, with Private Offices, Kitchenette, Private Washrooms, Waiting Area, Reception and Storage.</li><li>Private Shipping Door with Direct Access to Space and Storage.</li><li>Ample Surface parking</li></ul> |

**K.P. GILLEN & CO. REALTY LTD.**  
**BROKERAGE**  
40 Scollard Street Suite 200  
Toronto, ON M5R 3S1  
(416) 964 9441  
[www.kpgillen.com](http://www.kpgillen.com)

**KEVIN P. GILLEN**  
**FRI, BROKER, PRESIDENT**  
(416) 964 9460  
[Kevin@kpgillen.com](mailto:Kevin@kpgillen.com)

**Kaitlin Gillen**  
**SALES REPRESENTATIVE**  
(416) 856-9527  
[Kaitlin@kpgillen.com](mailto:Kaitlin@kpgillen.com)

# 111 RAILSIDE ROAD – AREA 2 | FLOOR PLANS



**K.P. GILLEN & CO. REALTY LTD.**  
BROKERAGE  
40 Scollard Street Suite 200  
Toronto, ON M5R 3S1  
(416) 964 9441  
[www.kpgillen.com](http://www.kpgillen.com)

**KEVIN P. GILLEN**  
FRI, BROKER, PRESIDENT  
(416) 964 9460  
[Kevin@kpgillen.com](mailto:Kevin@kpgillen.com)

**Kaitlin Gillen**  
SALES REPRESENTATIVE  
(416) 856-9527  
[Kaitlin@kpgillen.com](mailto:Kaitlin@kpgillen.com)



# 111 RAILSIDE ROAD- AREA 2 | PHOTOS



**K.P. GILLEN & CO. REALTY LTD.**  
**BROKERAGE**  
40 Scollard Street Suite 200  
Toronto, ON M5R 3S1  
(416) 964 9441  
[www.kpgillen.com](http://www.kpgillen.com)

**KEVIN P. GILLEN**  
**FRI, BROKER, PRESIDENT**  
(416) 964 9460  
[Kevin@kpgillen.com](mailto:Kevin@kpgillen.com)

**Kaitlin Gillen**  
**SALES REPRESENTATIVE**  
(416) 856-9527  
[Kaitlin@kpgillen.com](mailto:Kaitlin@kpgillen.com)

Although K.P. GILLEN & CO. REALTY LTD. attempts to ensure that all information provided is accurate and complete, we do not represent that it is so, or guarantee it, and accept no liability or obligation for accuracy or completeness. If there is any discrepancy between information posted on our website and in an original paper version, the version that is most current should be considered to be the authoritative version.