

FOR LEASE

K.P Gillen & Co. Realty Ltd.

1352 BATHURST STREET, #301

TORONTO | ON

Private office in stunning loft-style commercial condo- ideal for anyone looking for a more flexible leasing option. Support staff office also available.



\$1,650/month for the private office (+\$700 for the support staff office, if applicable).

Landlord is flexible on terms.

Call to view the space.
Some Furniture may also be available by request.

- No capital costs, No extra charges for utilities
- Skylights and Windows provide ample natural light
- Reception area to accommodate your clients and guests
 - Access to kitchen and common areas
 - Flexible terms
- Shared boardroom and Copier Access

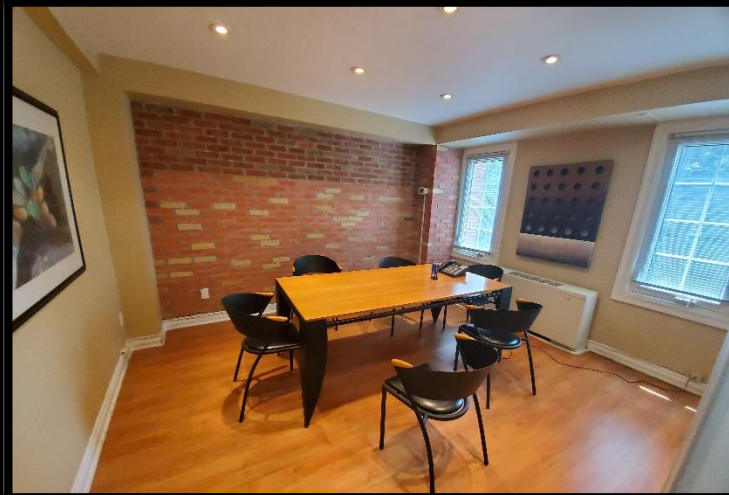
K.P. GILLEN & CO. REALTY LTD.
BROKERAGE
40 Scollard Street Suite 200
Toronto, ON M5R 3S1
(416) 964 9441
www.kpgillen.com

KAITLIN LAUREL GILLEN
SALES REPRESENTATIVE
(416) 856-9527
Kaitlin@kpgillen.com

KEVIN P. GILLEN FRI,
BROKER, PRESIDENT
(416) 964 9460
Kevin@kpgillen.com

Although K.P. GILLEN & CO. REALTY LTD. attempts to ensure that all information provided is accurate and complete, we do not represent that it is so, or guarantee it, and accept no liability or obligation for accuracy or completeness. If there is any discrepancy between information posted on our website and in an original paper version, the version that is most current should be considered to be the authoritative version.

1352 BATHURST STREET #301 | PHOTOS



K.P. GILLEN & CO. REALTY LTD.
BROKERAGE
40 Scollard Street Suite 200
Toronto, ON M5R 3S1
(416) 964 9441
www.kpgillen.com

KAITLIN LAUREL GILLEN
SALES REPRESENTATIVE
(416) 856-9527
Kaitlin@kpgillen.com

KEVIN P. GILLEN FRI,
BROKER, PRESIDENT
(416) 964 9460
Kevin@kpgillen.com

Although K.P. GILLEN & CO. REALTY LTD. attempts to ensure that all information provided is accurate and complete, we do not represent that it is so, or guarantee it, and accept no liability or obligation for accuracy or completeness. If there is any discrepancy between information posted on our website and in an original paper version, the version that is most current should be considered to be the authoritative version.