



1256 Yonge Street

Second Level



PROPERTY DETAILS

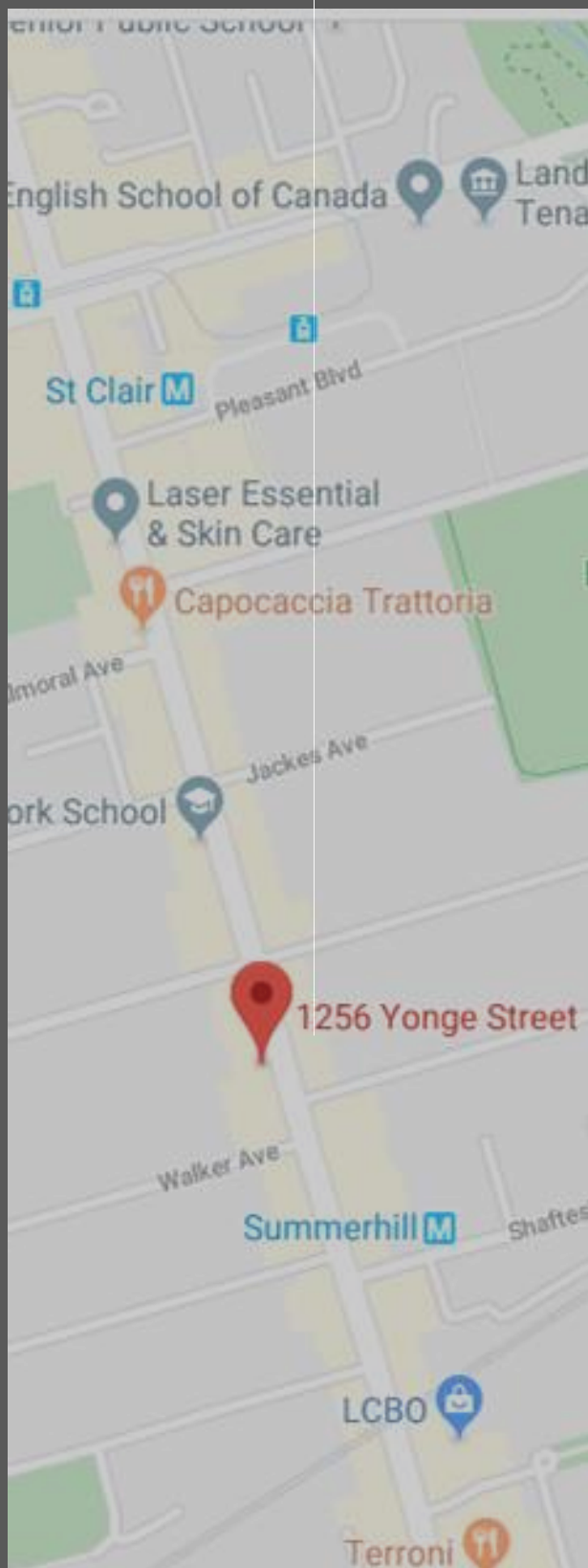
Unit Area: 2267 psf

Asking Price: \$25.00 psf

TMI: \$12.34 psf

Possession: May 30th 2020 or TBA

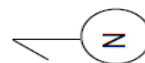
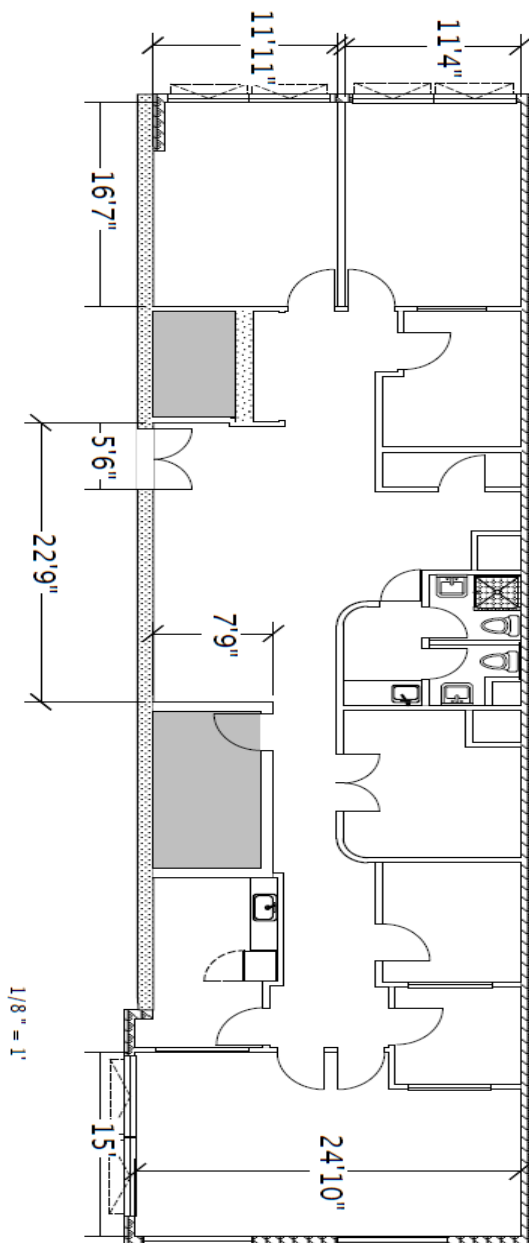
Features: Steps from Summerhill
Subway station, service
shops and restaurants.
Bright recently renovated
space
Passenger elevator
Two car parking included
in rent



1256 Yonge Street Second Floor

FLOOR PLANS

1256 Yonge Street, Suite 202
Toronto, Canada M4T 1W5



K.P. GILLEN & CO. REALTY LTD.
BROKERAGE
40 Scollard Street Suite 200
Toronto, ON M5R 3S1
(416) 964 9441
www.kpgillen.com

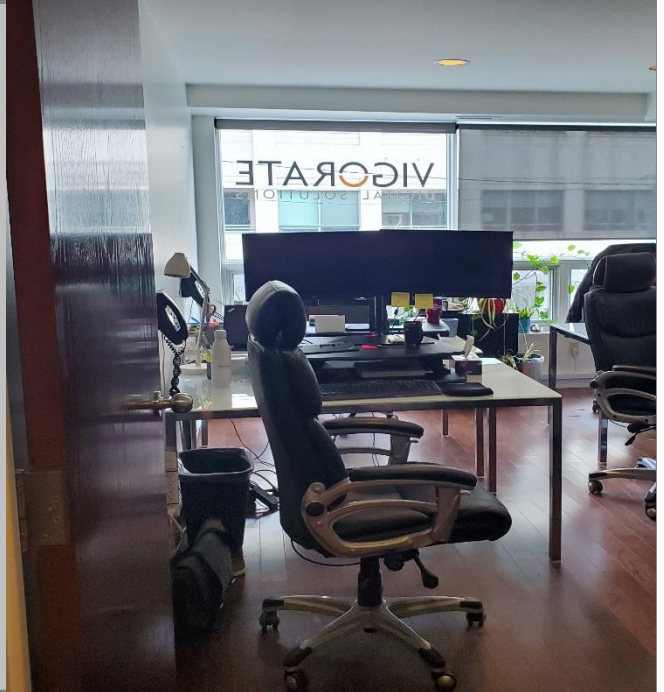
Although K.P. GILLEN & CO. REALTY LTD. attempts to ensure that all information provided is accurate and complete, we do not represent that it is so, or guarantee it, and accept no liability or obligation for accuracy or completeness. If there is any discrepancy between information posted on our website and in an original paper version, the version that is most current should be considered to be the authoritative version.

KEVIN P. GILLEN
FRI, BROKER, PRESIDENT
(416) 964 9460
Kevin@kpgillen.com

GILLEN

1256 Yonge Street

PHOTOS



K.P. GILLEN & CO. REALTY LTD.
BROKERAGE
40 Scollard Street Suite 200
Toronto, ON M5R 3S1
(416) 964 9441
www.kpgillen.com

Although K.P. GILLEN & CO. REALTY LTD. attempts to ensure that all information provided is accurate and complete, we do not represent that it is so, or guarantee it, and accept no liability or obligation for accuracy or completeness. If there is any discrepancy between information posted on our website and in an original paper version, the version that is most current should be considered to be the authoritative version.

KEVIN P. GILLEN
FRI, BROKER, PRESIDENT
(416) 964 9460
Kevin@kpgillen.com

GILLEN